

GND PA12 PB6 PB7 PB1 PA13 PA14 PB5 PA0 PA2 PA4 PA6 PB10 BATT GND

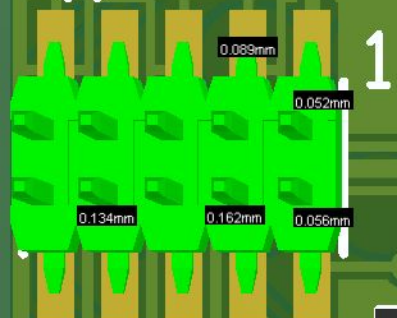
32

RST

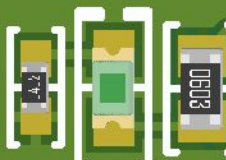
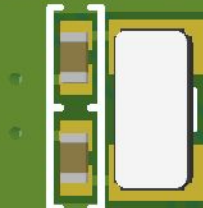
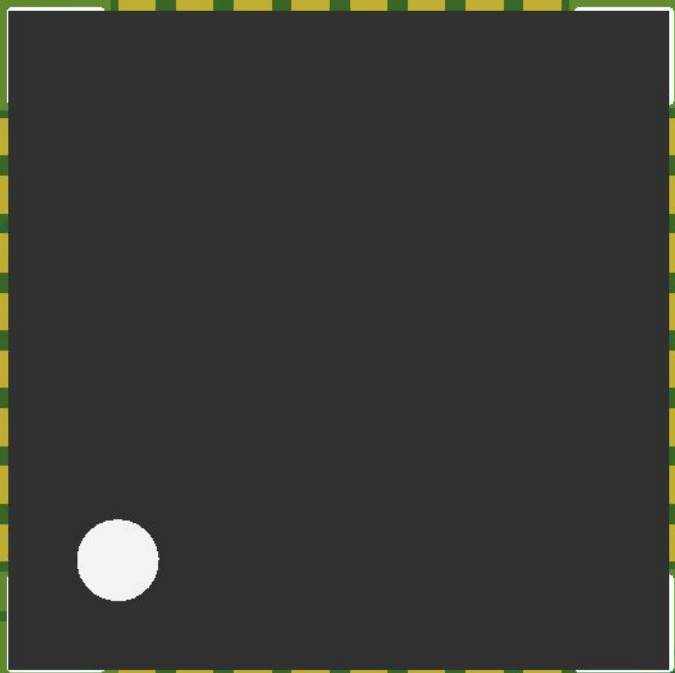
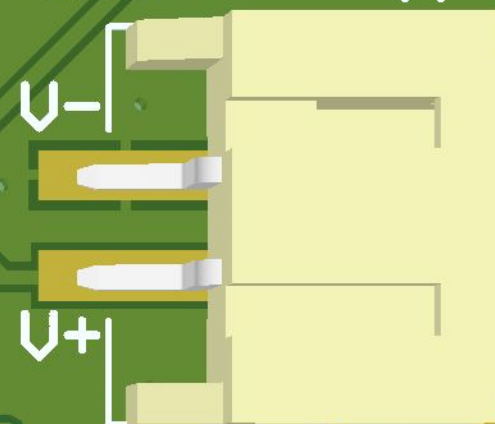
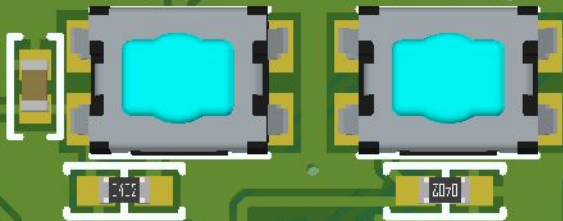
BOOT0

HT32SX V1.0

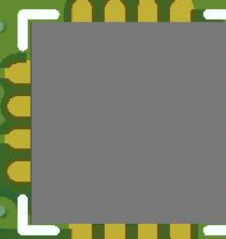
16



1



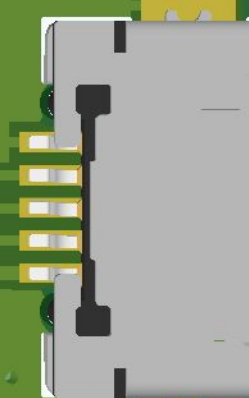
R4



R6



R5



1

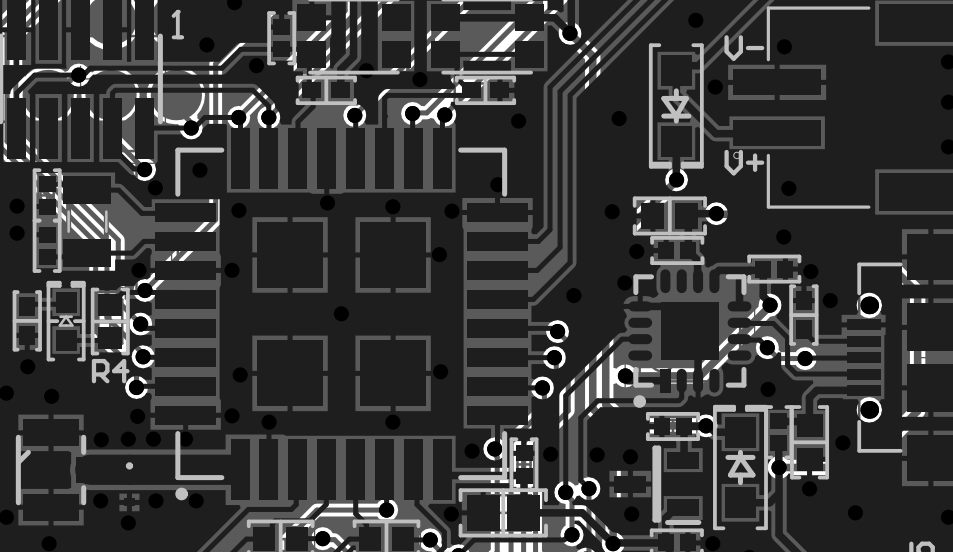
GND PA11 PA9 PA10 PB11 PB0 PA8 PA5 PA3 PA1 GND 3.3V GND +5V GND

15

GND PA12 PB6 PB7 PB1 PA13 PA14 PB5 PA0 PA2 PA4 PA6 PB10 BATT GND



32 RST BOOT0 HT32SX V1.0 16



1 R6 R5 15

GND PA11 PA9 PA10 PB11 PB0 PA8 PA5 PA3 PA1 GND 3.3V GND +5V GND